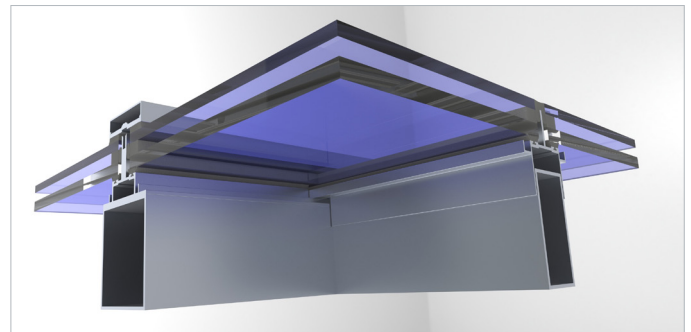
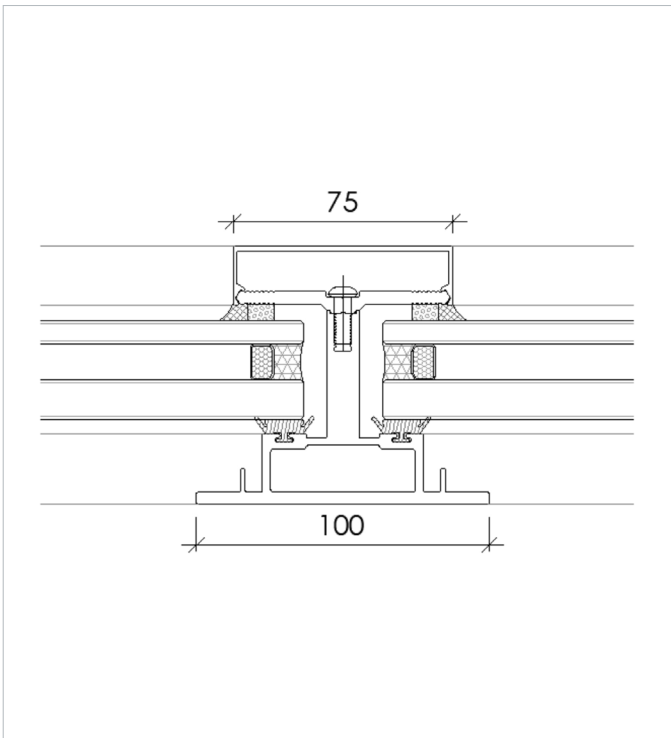


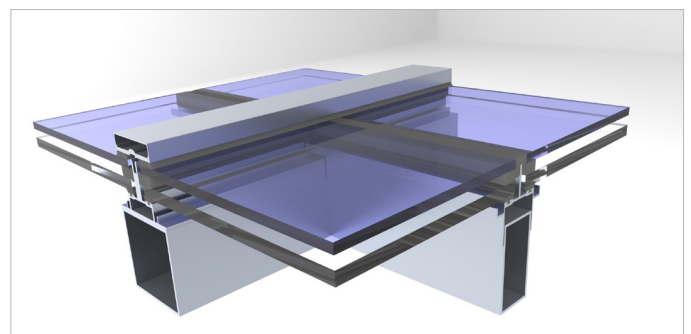
SKY100

SKYLIGHT

- Offsite prototype tested to:
 - AS/NZS 2047:2014 Windows and external glazed doors in buildings.
 - TN67 hard body, soft body, static load testing.
- Developed by a team of expert designers, manufacturers and installers specifically for the Australian market.
- Extruded and manufactured in Melbourne.
- Available as a thermally broken system.
- Fast lead times.
- Low carbon footprint.
- For system details please contact Spective.

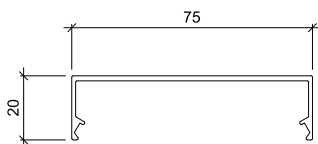


SKY100 Underside view

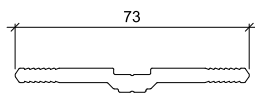


SKY100 Above view

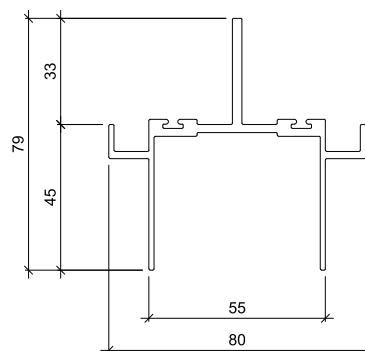
SKY100 SKYLIGHT PROFILE



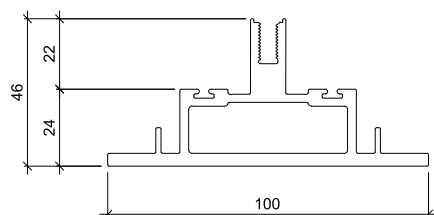
SKYLIGHT CAP
CODE: SK10003
MASS Kg/m: .474
AP: 235.25
ALLOY: 6060 T5



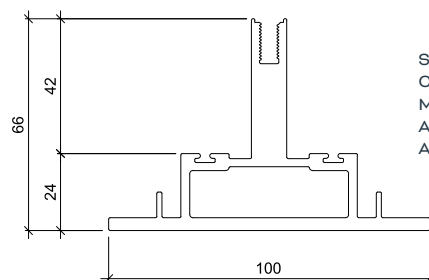
SKYLIGHT CLAMP BAR
CODE: SK10002
MASS Kg/m: 0.886
AP: 166
ALLOY: 6060 T5



SKYLIGHT MULLION
CODE: SK10004
MASS Kg/m: 1.381
AP: 458.5
ALLOY: 6060 T5



SINGLE GLAZED SKYLIGHT
BASE
CODE: SK10005
MASS Kg/m: 2.378
AP: 388.49
ALLOY: 6060 T5



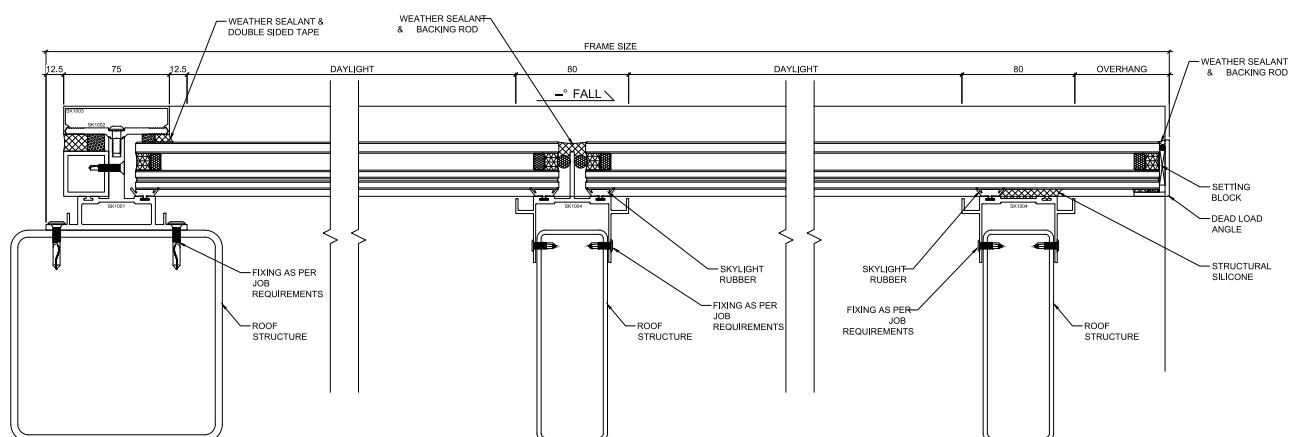
SKYLIGHT BASE
CODE: SK10001
MASS Kg/m: 2.975
AP: 426.35
ALLOY: 6060 T5

SKY100 SEALS



SKYLIGHT RUBBER
MATERIAL:
SANTOPRENE
SHORE A HARDNESS: 67

SKY100 SKYLIGHT MULLION ASSEMBLY



SKY100 SKYLIGHT BASE ASSEMBLY

