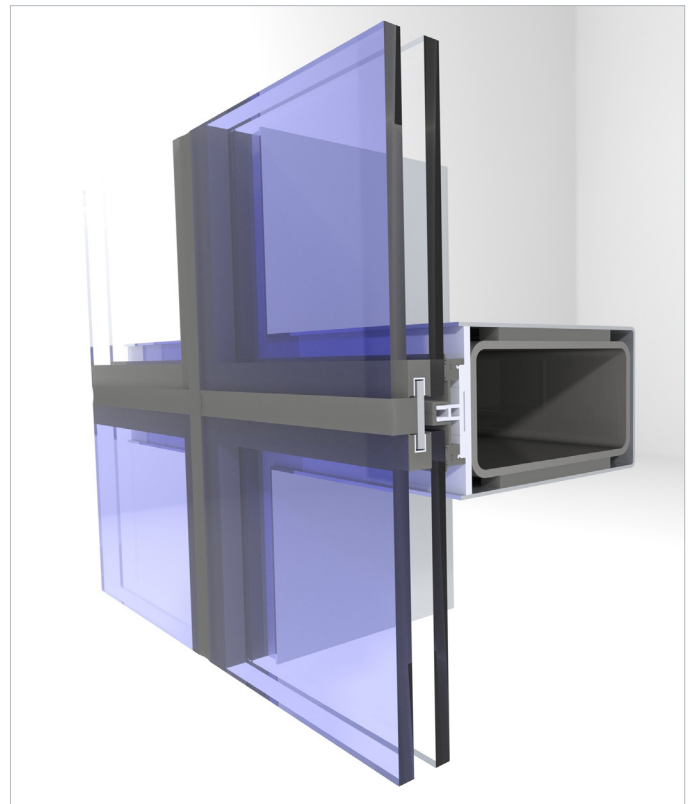
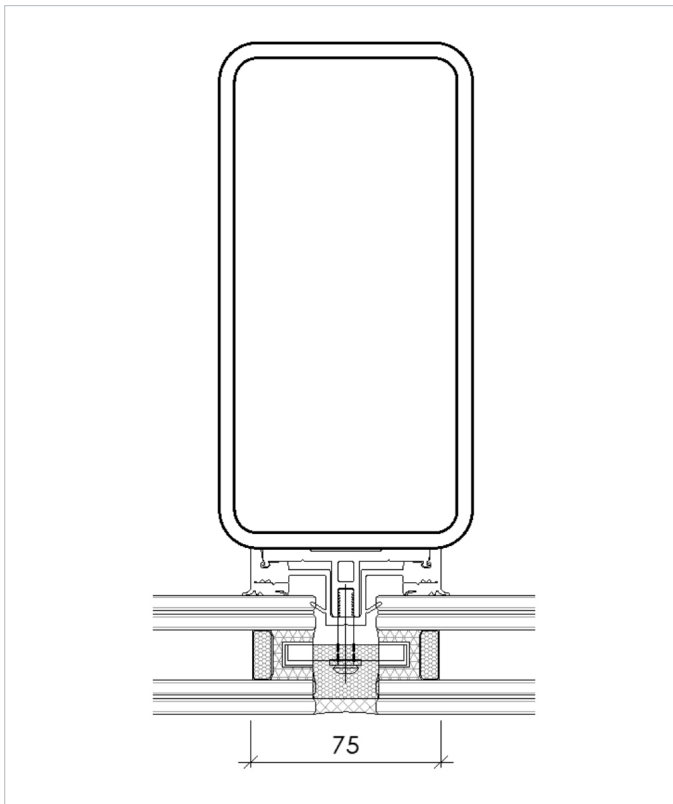


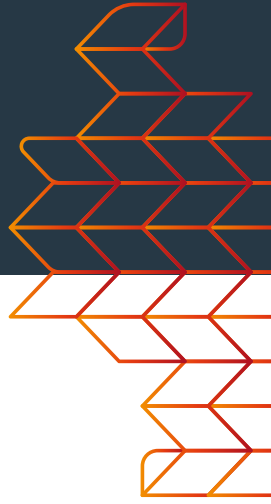
SGA75

75MM STRUCTURAL GLAZING ADAPTOR

- Suitable to fixing into a variety of substrates.
- Offsite prototype tested to
 - AS/NZS 2047:2014 Windows and external glazed doors in buildings.
- Developed by a team of expert designers, manufacturers and installers specifically for the Australian market.
- Extruded and manufactured in Melbourne.
- Fast lead times.
- Low carbon footprint.
- For system details please contact Spective.



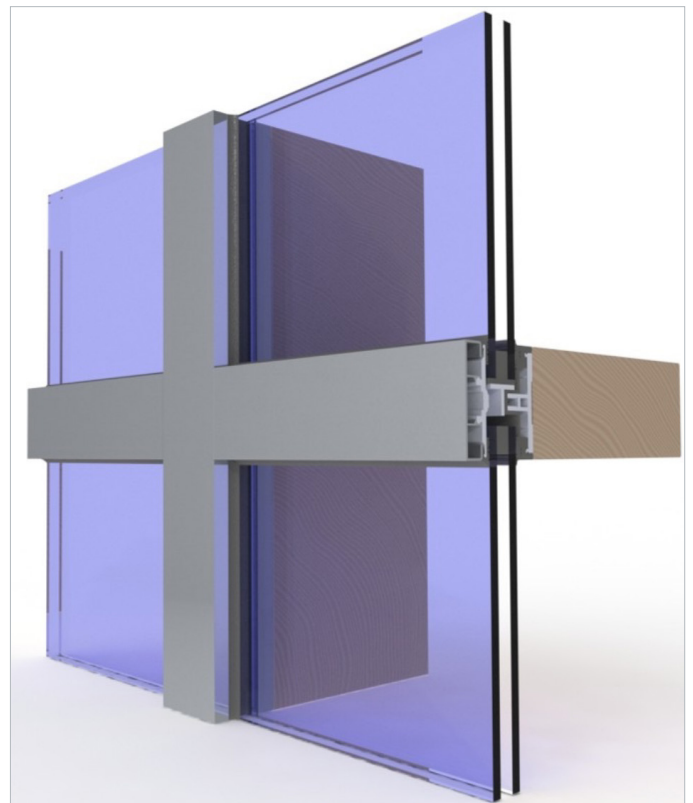
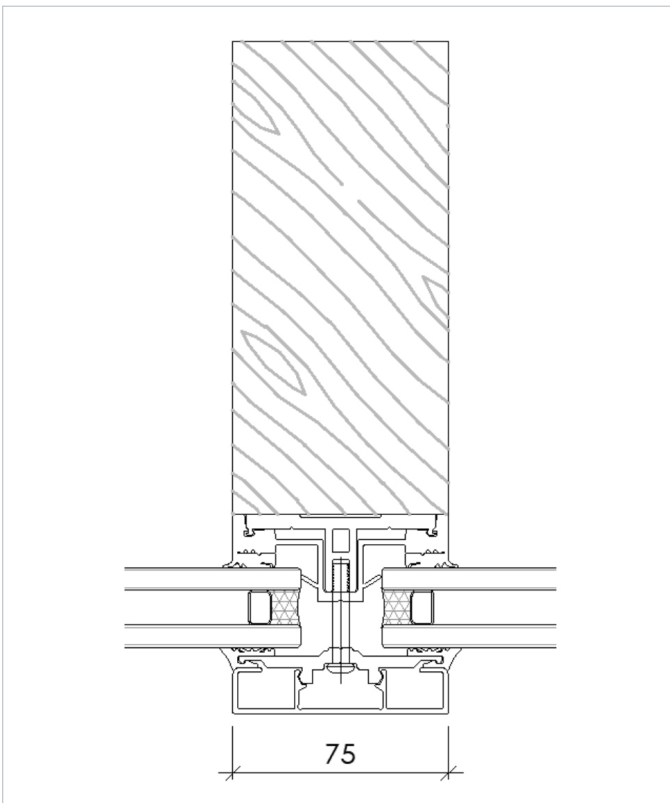
SGA75 Structural Glazing Adaptor



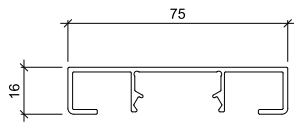
CGA75

75MM CAPTIVE GLAZING ADAPTOR

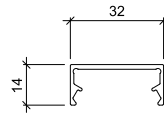
- Suitable to fixing into a variety of substrates.
- Offsite prototype tested to:
 - AS/NZS 2047:2014 Windows and external glazed doors in buildings.
- Developed by a team of expert designers, manufacturers and installers specifically for the Australian market.
- Extruded and manufactured in Melbourne.
- Fast lead times.
- Low carbon footprint.
- For system details please contact Spective.



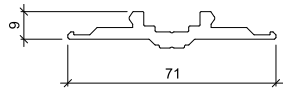
SGA75 & CGA75 - 75mm GLAZING ADAPTOR PROFILE



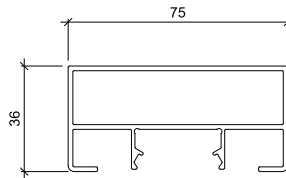
SPG PLANT ON CAP
CODE: GA7503
Kg/M: 0.633
AP: 304.34
ALLOY: 6060 T5



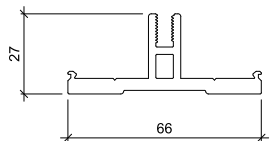
SPG PLANT ON
TIMBER CAP
CODE: GA7504
Kg/M: 0.245
AP: 124.39
ALLOY: 6060 T5



SPG PLANT ON
CLAMP BAR
CODE: GA7502
Kg/M: 0.841
AP: 176.61
ALLOY: 6060 T5

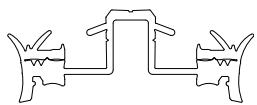


SPG PLANT ON CAP 36
CODE: GA7505
Kg/M: 1.116
AP: 344.1
ALLOY: 6060 T5

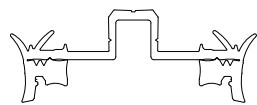


SPG PLANT ON BASE
CODE: GA7501
Kg/M: 1.227
AP: 231.06
ALLOY: 6060 T5

SGA75 SEALS



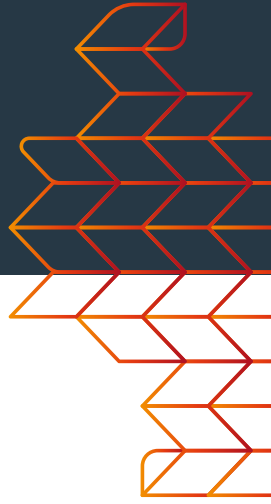
PLANT ON RUBBER
MULLION MATERIAL: EPDM
SHORE A HARDNESS: 70 ±5



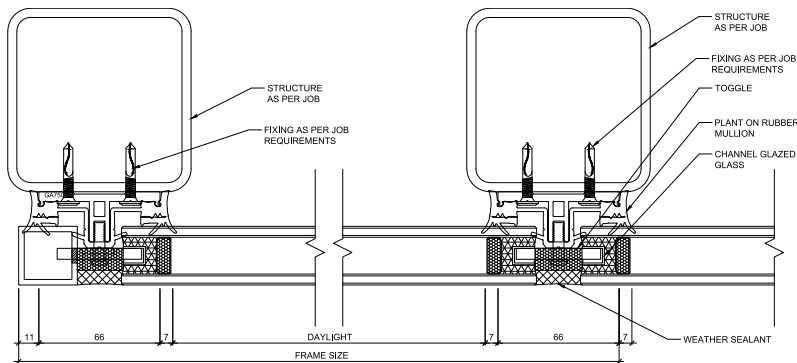
PLANT ON RUBBER
TRANSOM MATERIAL: EPDM
SHORE A HARDNESS: 75 ±5



PLANT ON RUBBER
CLAMP BAR MATERIAL: EPDM
SHORE A HARDNESS: 70 ±5

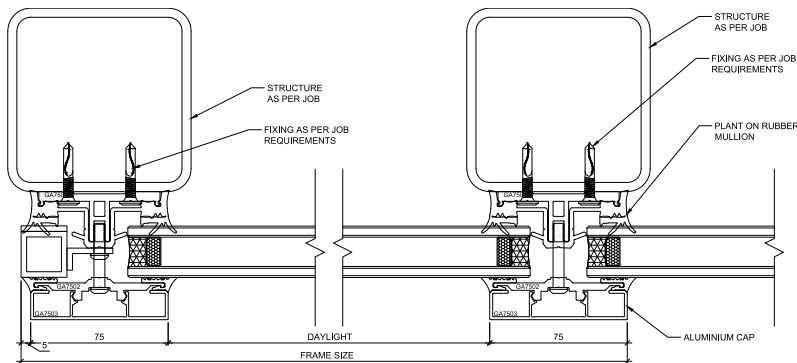


SGA75 & CGA75 – 75mm GLAZING ADAPTOR PROFILE

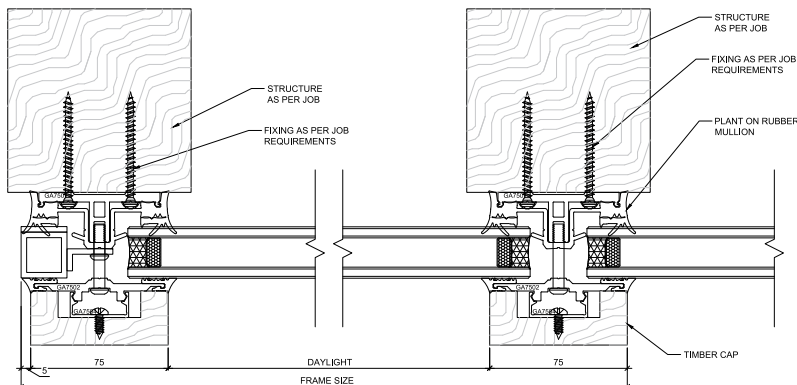


CGA75 – 75mm CAPTIVE GLAZING ADAPTOR ASSEMBLY

ALUMINIUM CAP

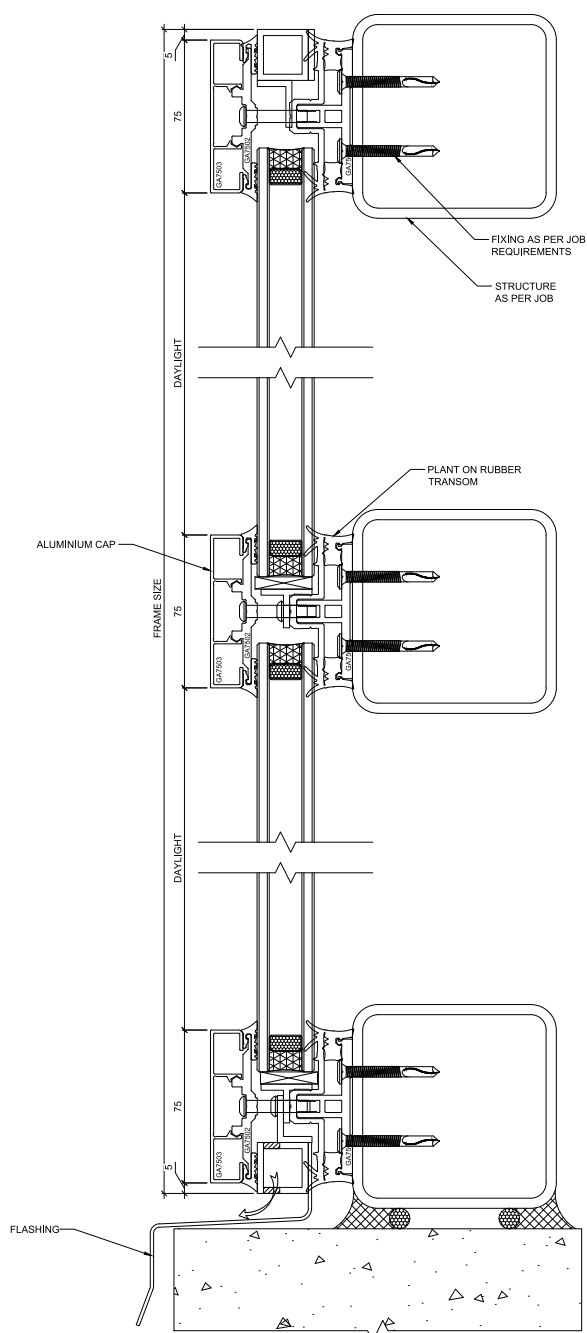


TIMBER CAP

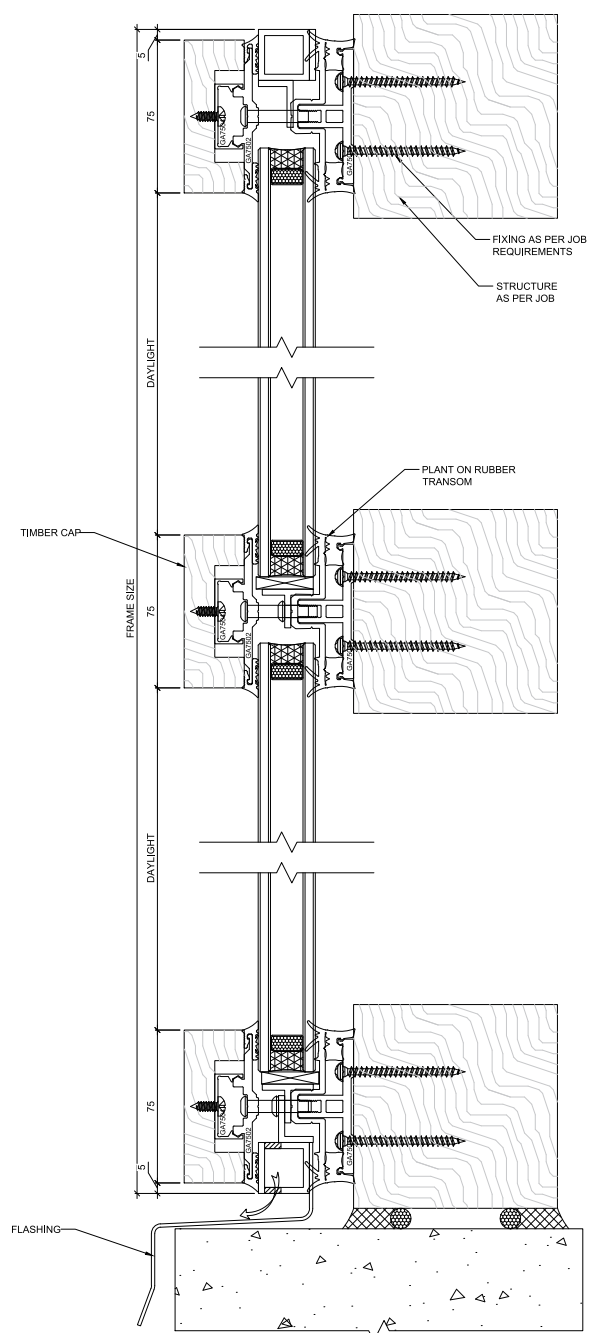


CGA75 – CAPTIVE GLAZING ADAPTOR VERTICAL ASSEMBLY

ALUMINIUM CAP



TIMBER CAP



Technical cross-section diagram of a window assembly showing three units. The diagram includes the following labels and dimensions:

- Labels:**
 - FIXING AS PER JOB REQUIREMENTS
 - STRUCTURE AS PER JOB
 - CHANNEL GLAZED GLASS
 - PLANT ON RUBBER TRANSOM
 - WEATHER SEALANT
 - FLASHING
- Dimensions:**
 - 11
 - 66
 - 7
 - DAY LIGHT
 - FRAME SIZE
 - 66
 - 7
 - 7
 - 66
 - 11